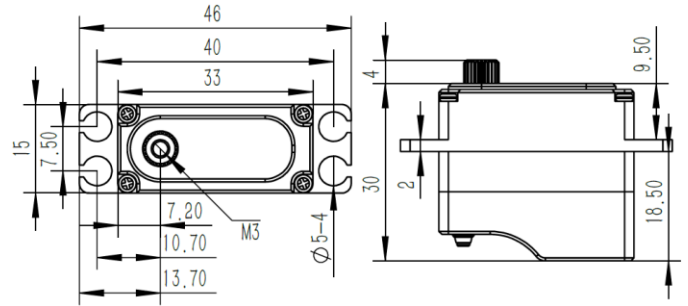
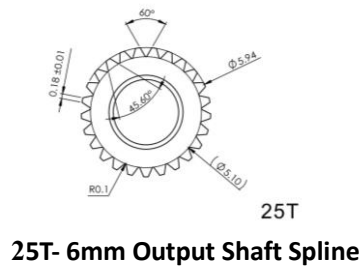


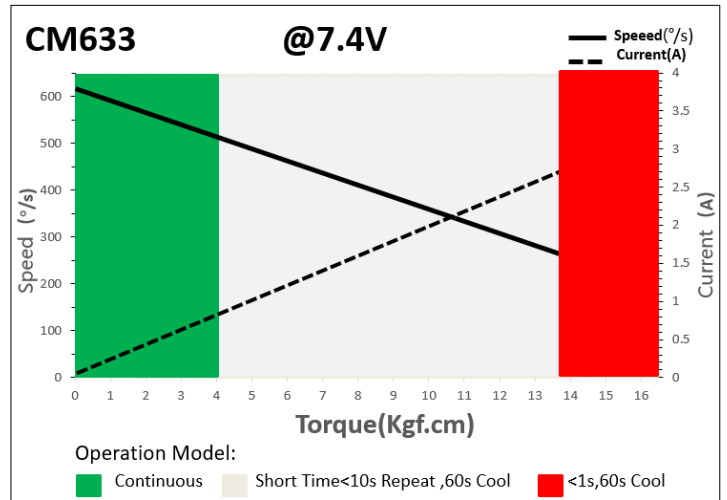
### CM633 Technical Specification



#### 1. Operating Data

Rated Voltage	DC7.4V
Voltage Range	DC4.8V-8.4V
Torque	9.00Kgf.cm@4.8V
	12.0Kgf.cm@6.0V
	13.8Kgf.cm@7.4V
	15.0Kgf.cm@8.4V
Speed	0.14sec/60°@4.8V
	0.11sec/60°@6.0V
	0.09sec/60°@7.4V
	0.08sec/60°@8.4V
Start Current	1.85A@4.8V
	2.65A@6.0V
	2.95A@7.4V
	3.25A@8.4V
Working Frequency	1520us/333Hz
Default Travel Angle	±50° =100° Total
Temperature Range	-10°C.....+65°C
Soft Start	Programmable
Programmable	Yes
Case Material	Aluminum Alloy
Motor Type	Coreless DC Motor
Gear Set Material	Metal Gear
Position Sensor	Potentiometer
Ball Bearing	2BB
Case Dimensions	33mm*15mm*30mm±0.2mm
Weight	35g±10%

#### 2. Performance



#### 3. Command signal PWM Command Interface

Signal Voltage	HIGH: min.3.3V, max.5.0V Low: min.0.0V, max.1.5V
Pulse Lengths	900us-2100us
Pulse Lengths for Position -50° 0°/+50°	1000us/1500us/2000us

#### 4. Electrical Connection

Pin Assignment			
<p>3 2 1</p>	1	Orange	Signal PWM Command
	2	Red	DC+ Supply Voltage
	3	Brown	DC- Supply Ground