

T30 Trainer Airplane Instruction Manual



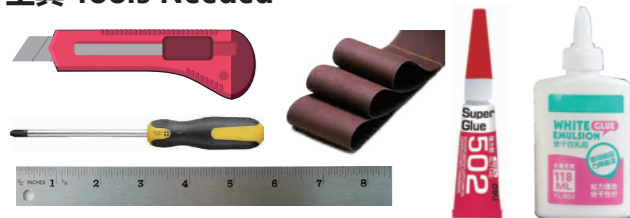
参数
 翼展: 1400mm
 机长: 1070mm
 起飞重量: ≈2000-2500g

Specification
 Wingspan: 1400mm
 Length: 1070mm
 Flying Weight≈2000-2500g

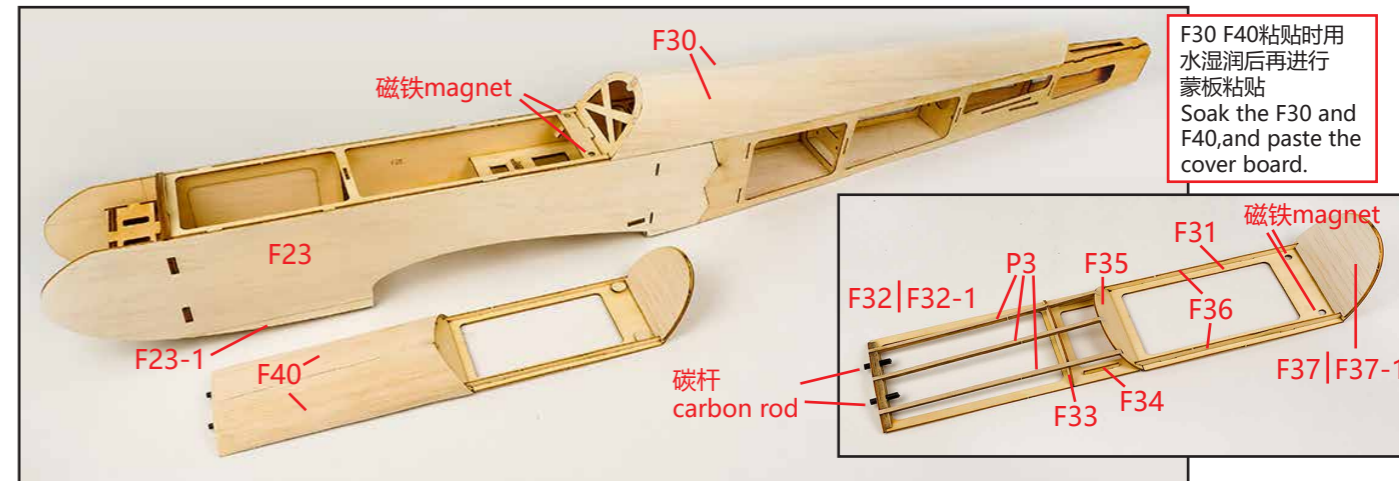
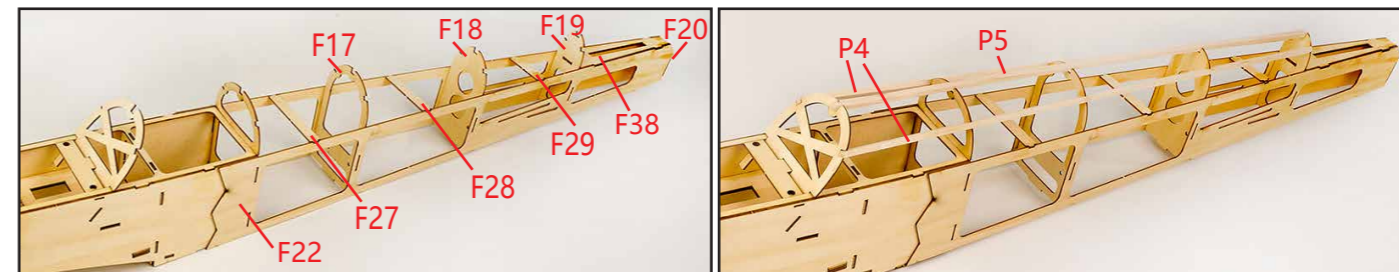
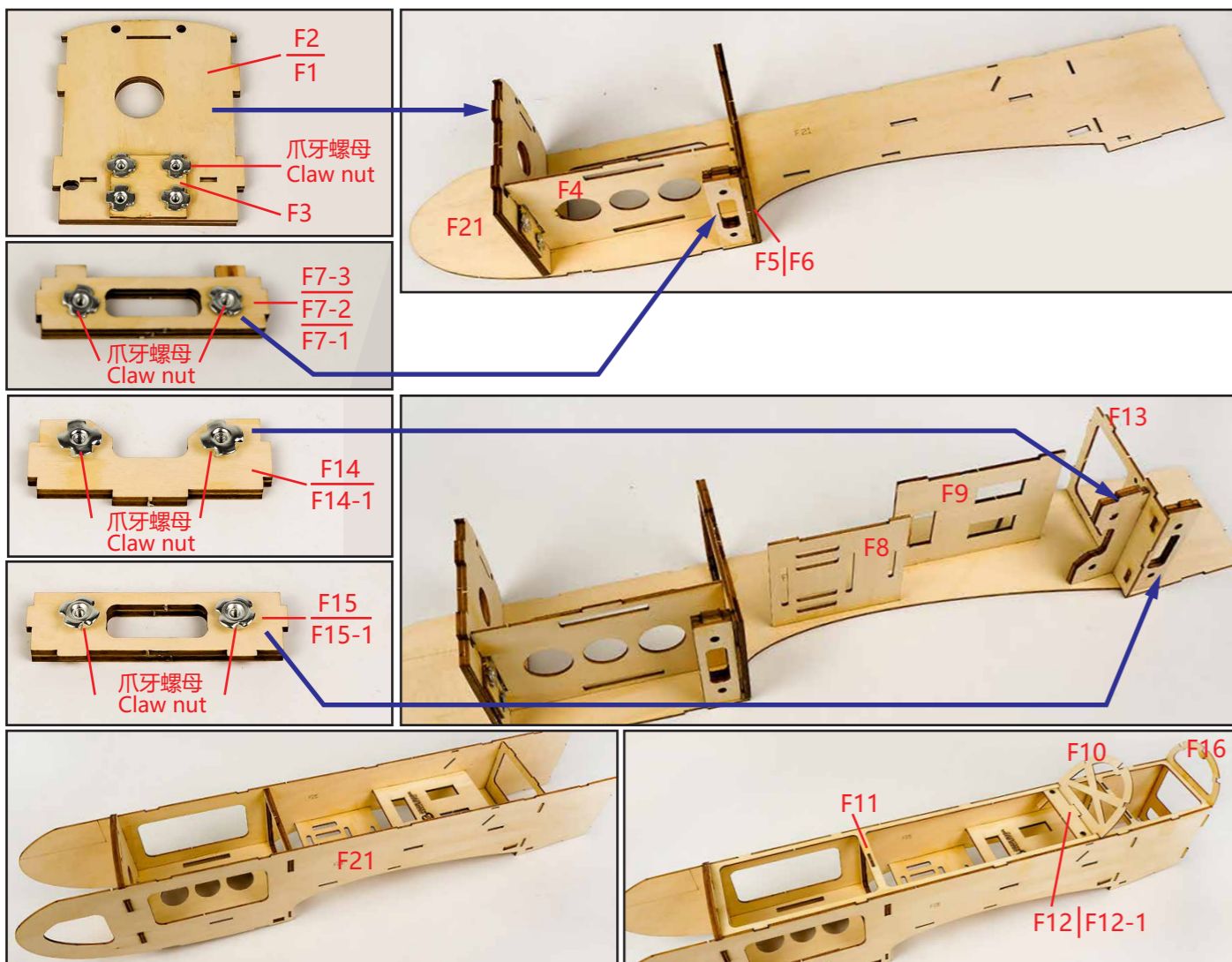
推荐配置
 马达: 2814-3520 600-1000KV
 电调: 40A
 电池: 4S 3600-5000mAh
 舵机: 17g*4
 引擎: 2C36 / 4C56
 桨叶: 10-12inch
 通道: ≥4CH

Suggested Equipment
 Electric powered: 2814-3520 600-1000kv
 ESC: 40A
 Battery: 4S 3600-5000mAh
 Servos: 17g*4
 Gas engine class: 2C36 / 4C56
 Propeller: 10-12inch
 Radio≥4CH

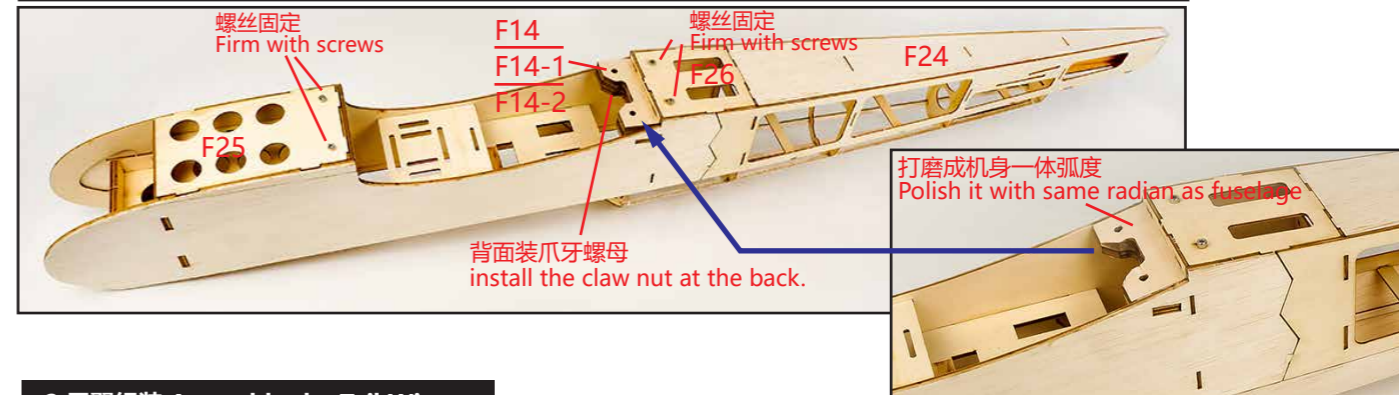
工具 Tools Needed



1. 机身组装 Assemble the Fuselage

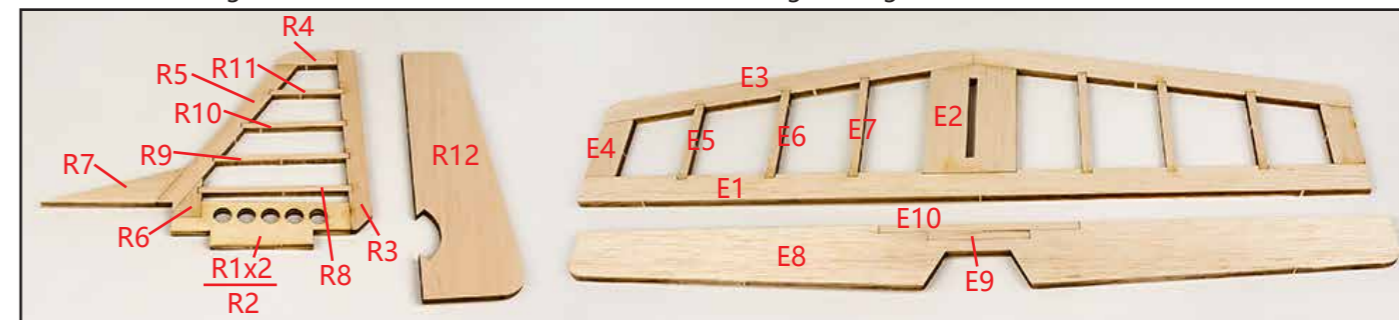


F30 F40粘帖时用水湿润后再进行蒙板粘帖
 Soak the F30 and F40, and paste the cover board.



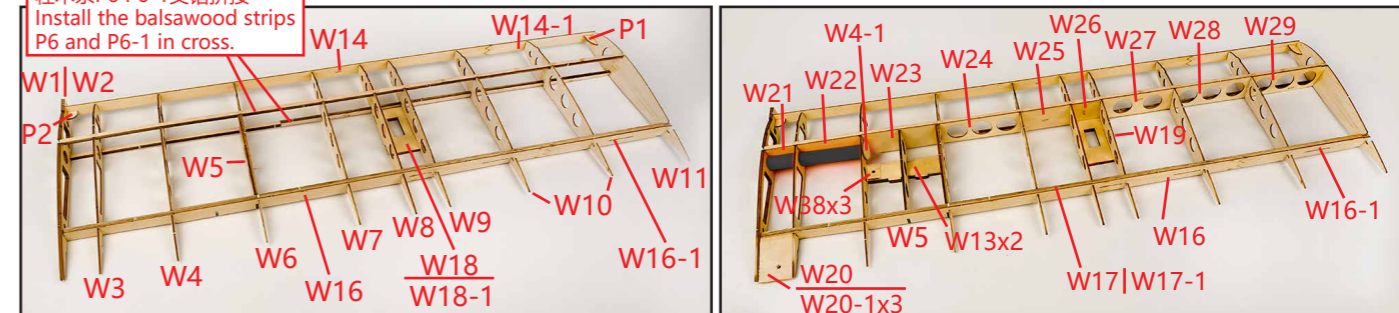
2. 尾翼组装 Assemble the Tail Wing

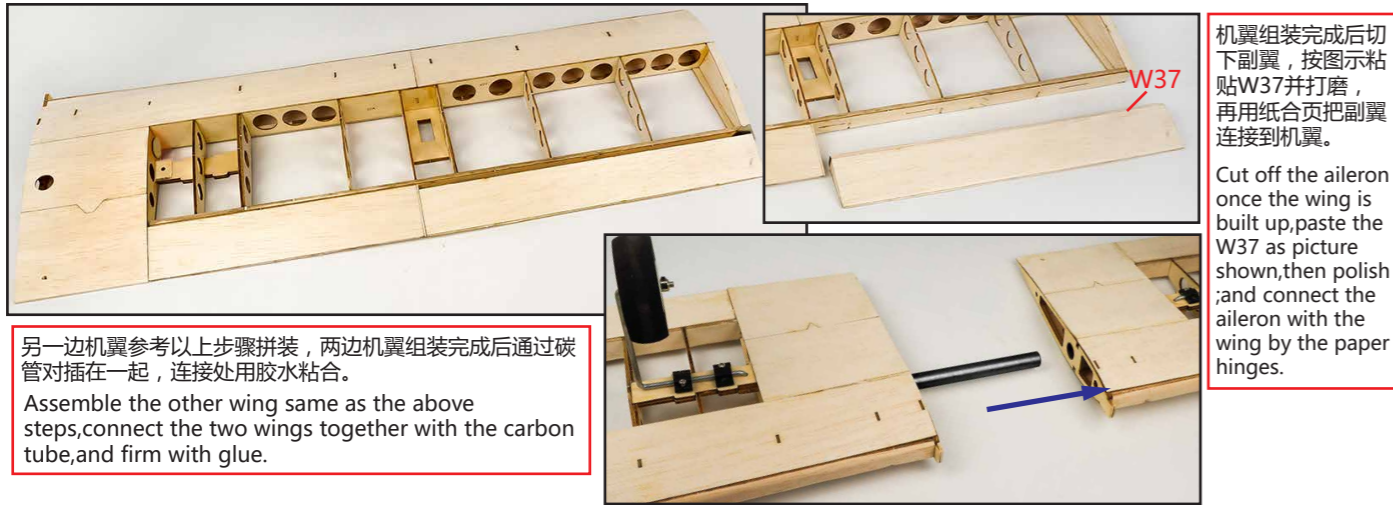
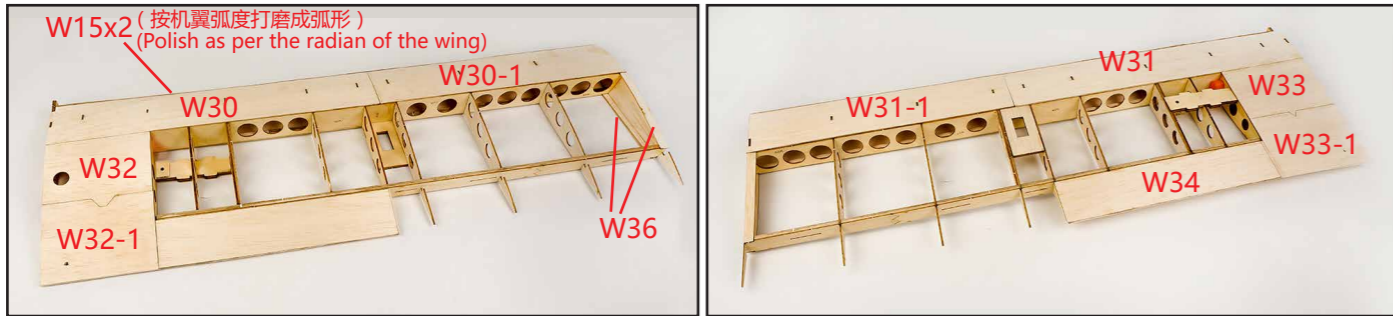
机翼和尾翼请在平整的工作台上进行拼装, 拼装时保持机翼平直。
 Assemble the wing and tail on the smooth desk, make sure the wing is straight.



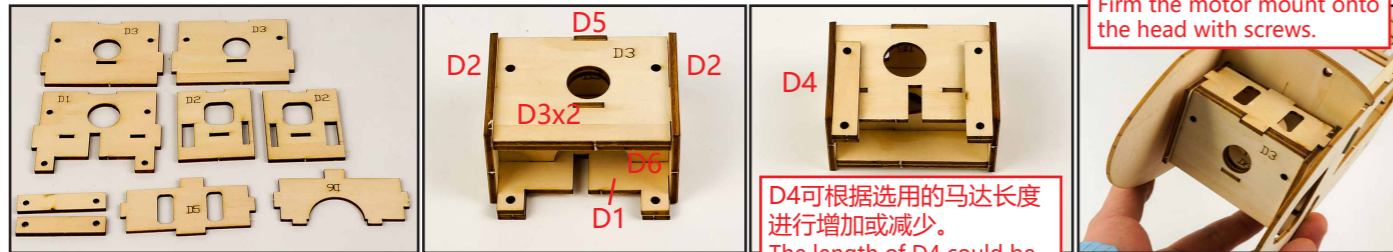
3. 机翼组装 Assemble the Wing

轻木条P6 P6-1交错拼接
 Install the balsawood strips P6 and P6-1 in cross.



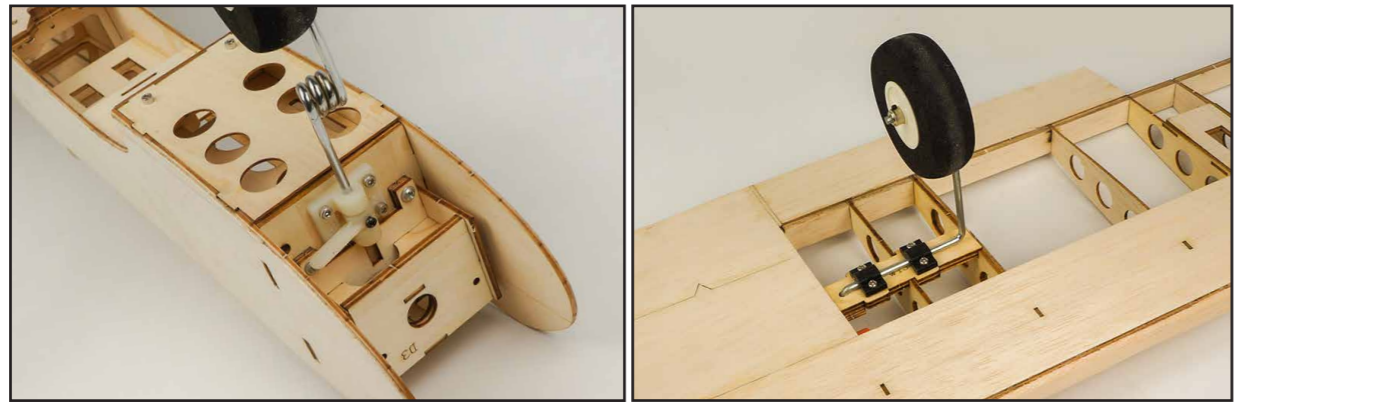


4, 马达座组装 Install the Motor Mount

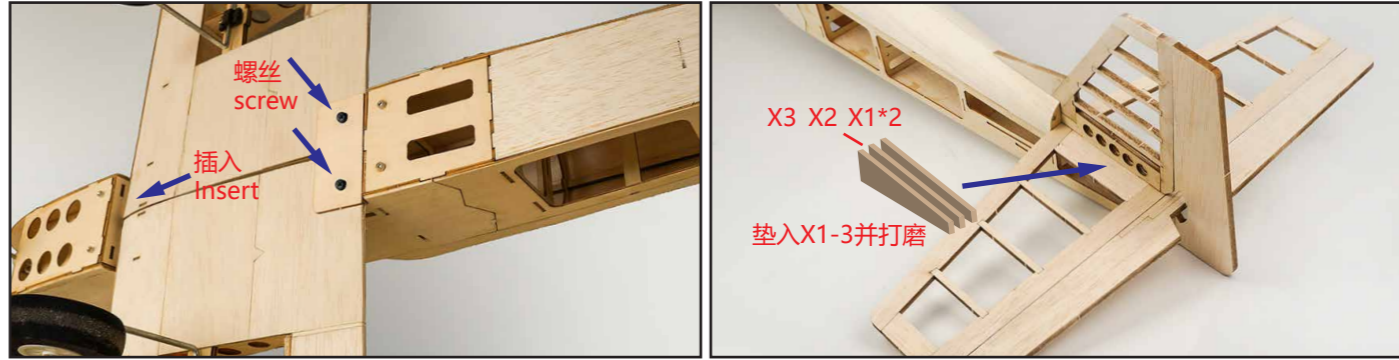


D4可根据选用的马达长度进行增加或减少。
The length of D4 could be increased or lessened as per the motor length.

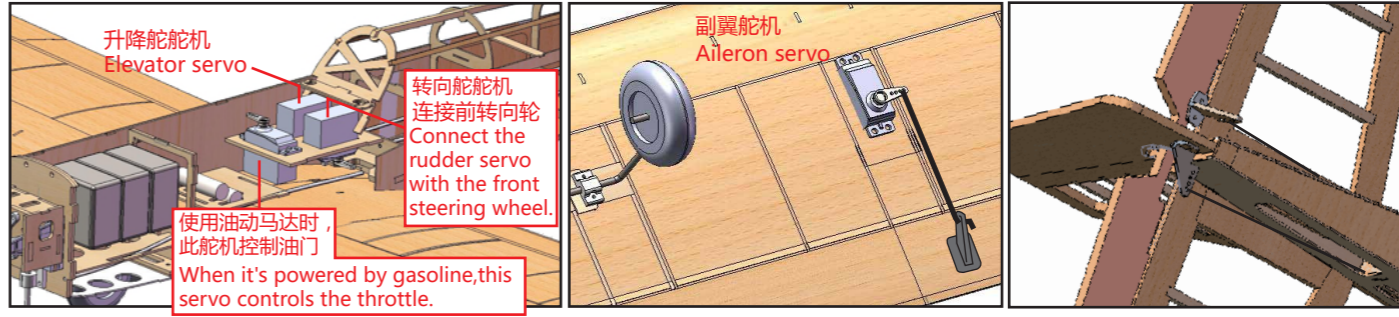
5, 起落架安装图 Assemle the Landing Gear



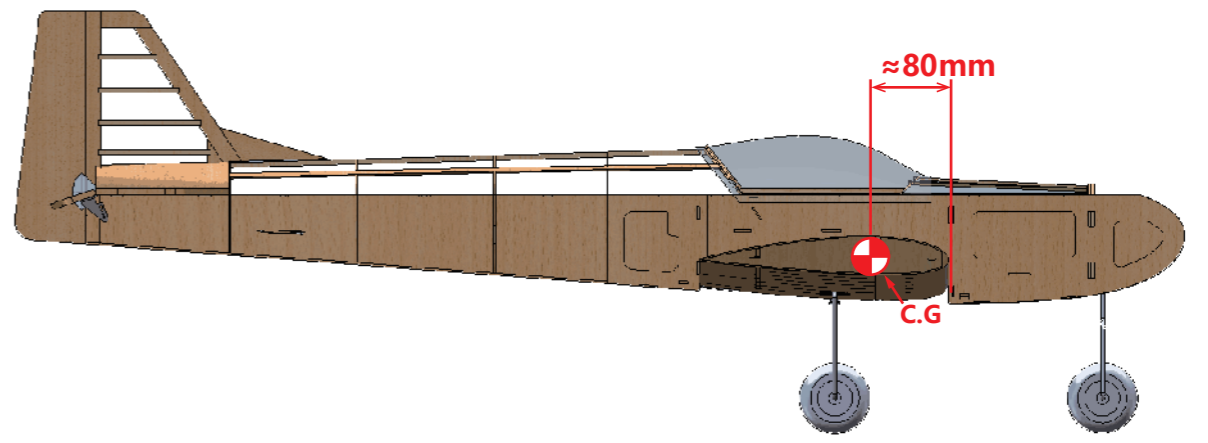
6, 机翼及尾翼安装到机身图 Assemle the wing onto the fuselage



7, 舵机, 舵角安装图 Install the servo and servo horn



8, 重心调试位置图 Adjust the C.G.



ADDITIONAL SAFETY PRECAUTIONS AND WARNINGS

Age Recommendation: This is not a toy, not for children under 14 years old.

1. Always keep a safe distance in all directions around your model to avoid collisions or injury. The model is controlled by a radio subject to interference from many sources outside your control. Interference can cause momentary loss of control.
2. Always operate your model in open spaces away from full-size vehicles, traffic and people.
3. Always carefully follow the directions and warnings for this and any optional support equipment (chargers, rechargeable battery packs, etc.).
4. Always keep all chemicals, small parts and anything electrical out of the reach of children.
5. Always avoid water exposure to all equipment not specifically designed and protected for this purpose. Moisture causes damage to electronics.
6. Never place any portion of the model in your mouth as it could cause serious injury or even death.
7. Never operate your model with low transmitter batteries.

